



Your Touchstone Energy[®] Cooperative
The power of human connections

Manager's Message

Dear Members: _____ by Jeff Hohn



BOARD VOTES TO PROCEED WITH CONSTRUCTION OF NEW FACILITIES

At a Special Board Meeting held on January 29, 2010, the Board of Directors voted to proceed with construction of new facilities. The new facilities will be located on East Monroe, and will consist of a warehouse and office. Construction is expected to take about a year. Construction is scheduled to begin as soon as weather permits. Once completed our entire Riverton operations will be moving to the new facilities. We will no longer have any part of our operations located at our current location on West Main. We will be placing our current office up for sale as soon as we are able.

Our Construction Manager at Risk ("CMAR") is Greg Pope of Pope Construction located in Casper. He will be in charge of overseeing the entire construction project. We recently held a bid opening in his office for all the subcontractors interested in participating in this project. We opened around 195 bids. The Board was not only happy with the number of bids, but also with what the Guaranteed Maximum Price ("GMP") came in at. Until the CMAR gets all the

subcontractors under contract, I am unable to disclose the GMP. Once he has everybody under contract, we will publicize the GMP. I can tell you that it has come in under what we had budgeted.

This project has not been something that the Board decided to do on a whim. The planning for this project began in June 2005 when we purchased the land on East Monroe. The Board formed a Building Committee whose job it was to meet with architects, builders, and other Cooperatives that built new facilities. The Committee toured a number of offices to get ideas so that they could get the best value for your dollar. The architect that was hired was C.H. Guernsey located in Oklahoma City. If that name sounds familiar, they are the same company that performs our Cost of Service Studies. So finally after five (5) years, the Board feels very confident that they are getting the best value for your dollar.

If you would like to contact me for any reason, my email address is jhhpp@wyoming.com.

Inside:

- 12th Annual Meeting.....2
- The Wildlife Challenge3

Please remember the scholarship application due date is March 12th.

12th Annual Meeting

April 17, 2010

The 12th Annual Meeting has been scheduled for April 17, 2010 to be held at the Riverton Armory in Riverton, Wyoming. Elections for directors in districts 1, 3, 6 and 7 will be conducted at the meeting.

Quorum needed to hold meeting

Remember to check your mail in April prior to the annual meeting. Proxy cards and the annual meeting notices which includes the agenda, financial information and board candidate biographies will be mailed the first part of April.

If for some reason you cannot attend the annual meeting, please complete the proxy card and give it to someone that you know will be attend-

ing. You may also complete the proxy card and mail it to the High Plains Power office.

It is imperative to have a quorum at the annual meeting. In order to have a quorum, according to the High Plains Power by laws, 100 members must be present in person to a constitute a quorum.

Nominating committee to meet in February

Also, according to the by laws, the board of directors appointed a twelve (12) member nominating committee member. It is their responsibility to nominate and post a list of nomination for directors for the districts up for election. The nominating committee will meet on February 26th.

Other ways to be nominated for a director is by petition. The petition requirement is that fifteen (15) or more members act together by signing a petition nominating a member to represent a district that is up for re-election.

Petitions can still be accepted until 15 days prior to the annual meeting. Nominations can also be taken from the floor during the annual meeting.

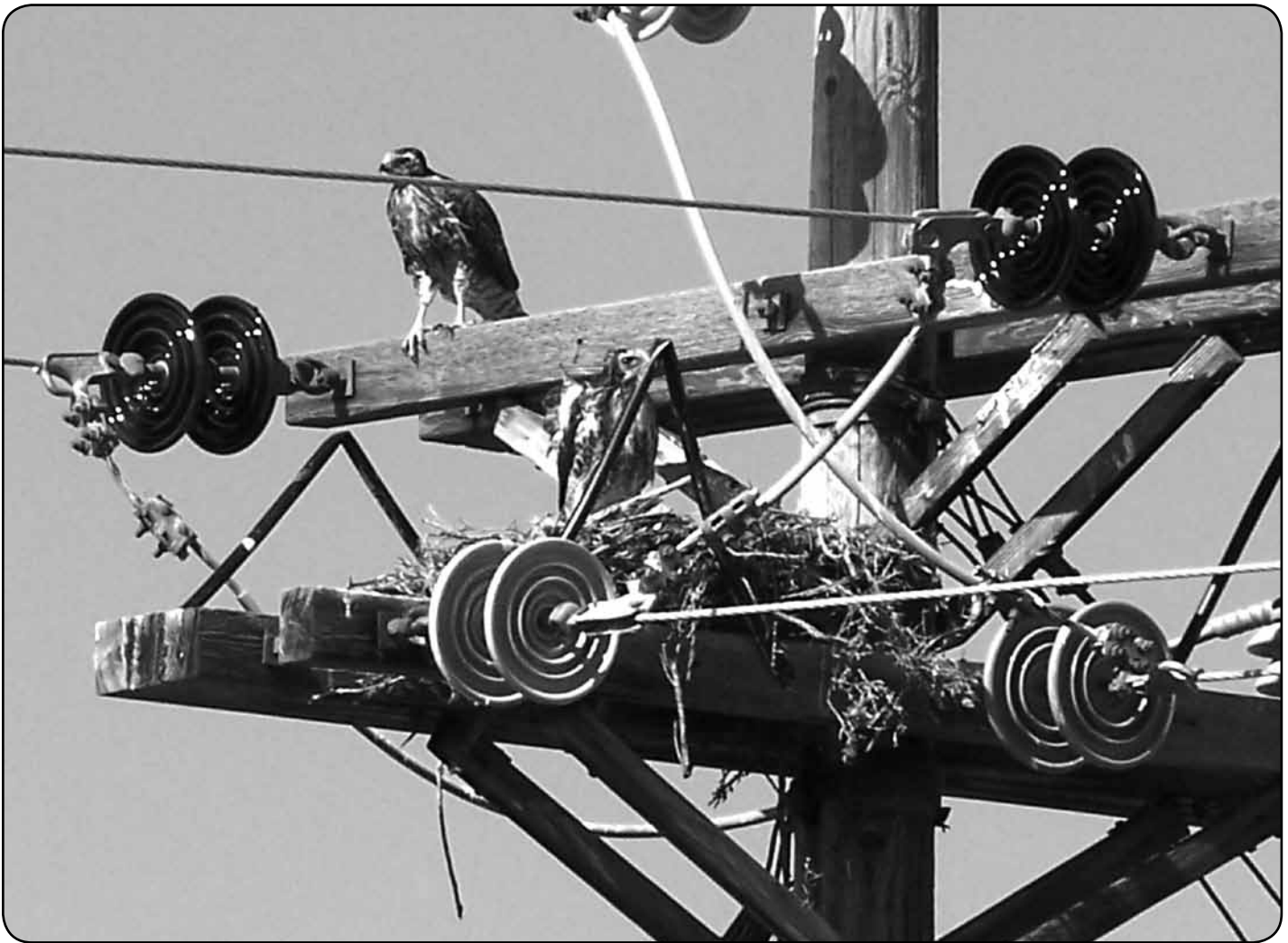
Please plan to attend as your annual meeting is an important opportunity to vote for director representation and to get informed about the business of your electric cooperative. It also provides a chance to visit with friends and enjoy a meal. You may even win one of many valuable door prizes.

Annual Meeting 2009 - People meeting People



The Wildlife Challenge

by Rich Lobdell



Nesting Red-tailed hawks on a de-energized section of power line.

Wildlife poses a huge challenge to electric utilities in Wyoming and across North America. Wildlife/power line interactions are usually of no consequence but sometimes critters can be killed or injured and power can be disrupted to customers. Birds are the primary challenge but furry, four legged critters such as squirrels and raccoons also pose a problem.

Birds present problems to power lines and themselves by colliding with conductors, building nests in hazardous locations or by making contact causing electrocution or injury. Wetland species such as Blue Herons usually don't cause outages but are in

danger of injury when power lines are located in close proximity to wetlands. Herons or swans sometimes collide with unseen conductors suspended between poles as they make their approach for a water landing. Large birds like eagles and vultures create problems through contact and electrocution and smaller birds such as hawks create problems through contact and nesting which will eventually lead to a contact/electrocution. Magpies, ravens and crows all contribute to contact/electrocution problems.

Nests frequently result in pole structures being burned and destroyed. Rain or wet snow on nesting material can cause short circuits and even our

four legged friends have caused destruction and many outages over the years when they make contact between energized conductors and ground.

All electric utilities are required by State and Federal law to make power lines as safe as possible for all migratory species of birds. In fact, protection by treaty, State or Federal law is extended to every native, and in some cases, non-native feathered creature in the US.

Raptors are the main focus of wildlife protection efforts in HPP's territory. Raptors are defined as any bird that kills with its feet. These "birds of prey" are commonly known as eagles,

(continued on page 4)

The Wildlife Challenge *by Rich Lobdell*

(continued from page 3)

hawks, osprey, falcons and owls, and we've got 'em all! Efforts to make our power lines as safe as possible for raptors also result in systems that are more reliable. Raptor proofing techniques used in new construction of power lines and retrofitting of exist-

ing lines has cut the amount of service interruptions significantly.

Bald and Golden eagles can have wingspans of up to 80 inches. New construction provides more safe space for these magnificent birds of prey. All new power line construction is done with this in mind.



Retrofitting involves rebuilding existing structures with more safe space or covering conductors to reduce the electrocution hazard. Neither new construction nor retrofitting can guarantee against electrocution, injury or outage but both methods are certainly improving the situation.

It is High Plains Power's commitment to provide safe reliable power to its members while protecting wildlife and our symbol of national pride, the Bald Eagle and all his cousins.

Left: Golden eagle perched on a retrofitted power pole.



Above: Active-incomplete Osprey nest on a raptor-safe pole. It's easy to see how this can become a problem!

High Plains Power

NEWS

is an official publication of High Plains Power, Inc., PO Box 713, Riverton, WY 82501.

Phone 307-856-9426
1-800-445-0613
www.highplainspower.org

Board of Directors

Bob Cardwell - President
Matt Brown - Vice-Pres.
Hearley Dockham - Secretary
Gary Gordon - Asst. Sec.
Jim Miller - Treasurer
Bret Gardner
Jesse Hankins
Richard Haun
Jeff Milton
Mark Park
Lee Shaffer
Harold Thompson

General Manager

Jeff Hohn

This is a monthly publication made available by High Plains Power, Inc., with the Wyoming Rural Electric News. Ideas, questions and comments are welcome.